








SET BR Technical dossier For Rigid Bronchoscopes

SETS BR Rigid Bronchoscopes Cleaning Range

<i>Internal cleaning of channels</i>					
Internal cleaning brush code for BR Sets	Length	Channel Diameter		Colour Code	
		Minimum	Maximum		
Product code: SET BR09/25					
SUL09 	55 cm	7 mm	9 mm	Red	
Product code: SET BR12/25					
SUL12 	55 cm	10 mm	12 mm	Blue	
Product code: SET BR16/25					
SUL16 	55 cm	12 mm	16 mm	White	
<i>Connexions cleaning (1 SULV08 in each set)</i>					
SULV08 	Large brush	5 mm	7 mm	Double Brush	
	Small brush	3 mm	5 mm		
<i>Rigid Endoscope External cleaning (1 external brush SUBEM in each set)</i>					
SUBEM 	Medium Fibres			Yellow	

Packaging:

- Ref: BRBA - Complete Adult Rigid Bronchoscopy Set (Box of 25 sets) including :
1 x SUL09 / 1 x SUL12 / 1 x SUL16 / 1 x SULV08 / 1 x SUBEM

- Ref: BRBA09 - For #9,00mm Size Tube Rigid Bronchoscopy (Box of 25 sets) including:
1 x SUL09 / 1 x SULV08 / 1 x SUBEM

- Ref: BRBA12 - For #12,00mm Size Tube Rigid Bronchoscopy (Box of 25 sets) including:
1 x SUL12 / 1 x SULV08 / 1 x SUBEM

- Ref: BRBA16 - For #14,00mm Size Tube Rigid Bronchoscopy (Box of 25 sets) including:
1 x SUL16 / 1 x SULV08 / 1 x SUBEM

European Directive 93/42/CE: Sets BR (Rigid Endoscope Cleaning Brushes) belong to class I, according to 'Annexe 9 rule 1 of that Directive, non implantable, non invasive device, dedicated to medical device cleaning by physical means before disinfection.

Single use medical device - Non sterile Medical Device

CE Mark – CE Conformity declaration of October, 26th, 2007

List of Components		
Elements	Components	Characteristics
<u>SUL</u>		
Wand	Flexible wand	Thermoplastic compound - No wiping plastic
		Non brush end with round end : Atraumatic for use by traction
	Colour	Food grade
Brush		
Bristles	Polyamide 6/12	45 mm minimum brush length
		Brush diameter, specific and adapted to each channel size
		Specific diameter and number of fibres (according to the references) to give the ideal cleaning properties for biofilm.
Wire	300 series Stainless steel	Atraumatic pin end for use by traction
<u>SUBEM</u>		
Handle		Thermoplastic compound
Bristles		Thermoplastic compound
<u>SULV08</u>		
Wand	Nickel compound	
Brush		
Bristles	Polyamide 6/12	Specific diameter and number of fibres (according to the references) to give the ideal cleaning properties for biofilm.
Wire	300 series Stainless steel	Atraumatic pin ends

Indications: The Sets BR brushes are intended for the internal/external cleaning of rigid Bronchoscopes with medium to large channels diameter (between 7 to 16 mm or from CH. 21 to CH. 48)- Compulsory cleaning step for preliminary treatment of sterilizable medical devices.

Contra-Indications: The Sets BR brushes have bristle diameter corresponding to precise inner diameters of the rigid Bronchoscope. The use of any inappropriate cleaning brushes may result in incomplete or ineffective cleaning.

Cautions: In order not to damage the brushes, avoid any brush compression during storage. we recommend storing Sets BR brushes in the storage box before use.

Recommendations:

Wear the gloves according to the cleaning procedure
 Protect yourself against any liquid projections.
 Before any cleaning, check the Sets BR brushes integrity and the general condition. Change if the appearance of the bristles is not correct.

Specific Instruction for use (apart from bronchoscope manufacturer instructions for use or hospital cleaning procedure):

We recommend the use in traction for the SUL brush in order not to re-infect the working channel and for easier cleaning.

Insert the SUL cleaning brush by the non-ended brush side in the channel (from the cleanest side) and push till the non-ended brush side gets out. Then grasp the SUL cleaning brush wand to provide the cleaning by traction with the brush in the working channel.

Clean and rinse the SUL cleaning brush if you need to brush several times the same working channel.

The Set BR cleaning brushes cannot be steam sterilized and have to be removed to the contaminated waste.

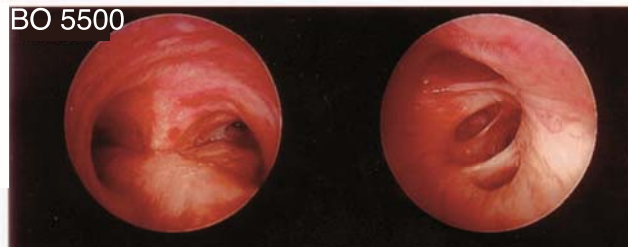


MediSurge RIGID BRONCHOSCOPES

NEW



THESE STEAM AUTOCLAVABLE OPTICS ARE DEDICATED TO THE RIGID DIAGNOSTIC AND THERAPEUTIC BRONCHOSCOPY. THEY ARE FULLY COMPATIBLE WITH RIGID DIAGNOSTIC OR THERAPEUTIC BRONCHOSCOPY INSTRUMENTATIONS OF THE MARKET.



INCLUDING THE LATEST TECHNOLOGY IN ROD LENS RIGID OPTICS, THESE BRONCHOSCOPES FEATURE AN OPTIMAL SHARP AND BRIGHT IMAGE

REFERENCE:	BO 5500 BO 5500C BO5530	BO 4000	BO2700
TECHNICAL FEATURES:	NEW		
DIAMETER:	5,5mm	4,0mm	2,7mm
WORKING LENGTH:	495mm (BO5500C: 395mm)		302mm
FIELD OF VIEW:	70°		
DIRECTION OF VIEW:	0° (BO5530: 30°)		
OPTICAL TECHNOLOGY:	HIGH RESOLUTION ROD LENS		
ACCESSORIES CONNECTION :	STORZ COMPATIBLE		
LIGHT GUIDE CONNECTORS:	STORZ / WOLF / ACMI		
AUTOCLAVABLE:	134° - 18MIN - 2 BARS		

CE - 0459



Light Accessories

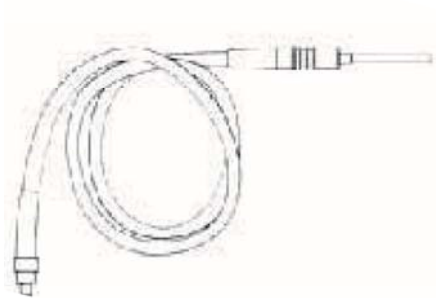
LIGHT GUIDES

OUR FLEXIBLE LIGHT GUIDES ARE FULLY AUTOCLAVABLE.

FOR USE WITH HIGH POWER XENON LIGHT SOURCES, WE OFFER EVEN HEAT RESISTANT SPECIAL CABLES.

SPECIAL APPLICATION CABLES ARE AVAILABLE LIKE TWIN LIGHT SOURCE OR ENDOSCOPE CONNEXIONS (Y CABLES)

OUR LIGHT GUIDES ARE AVAILABLE IN THE FOLLOWING DIMENSIONS:



DIMENSIONS	STANDARD	HEAT RESISTANT
Φ 3,5 mm / L. 1,8 m	GO135	GL135
Φ 3,5 mm / L. 2,3 m	GO235	GL235
Φ 4,9 mm / L. 1,8 m	GO149	GL149
Φ 4,9 mm / L. 2,3 m	GO249	GL249
Φ 4,9 mm / L. 3,0 m	GO349	GL349
Φ 4,9 mm / L. 1,1 m - Φ 3,5 mm / L. 1,2 m	GYE235	
Φ 3,5 mm / L. 0,6 m - Φ 4,9 mm / L. 1,7 m	GYS235	

IN ORDER TO PERFECTLY ANSWER YOUR NEEDS, OUR LIGHT GUIDES ARE REFERENCED WITH OUR LIGHT SOURCE AND ENDOSCOPE CONNECTORS. YOU CAN THEN CHOOSE IN OUR RANGE OF ADAPTORS FOR ALL THE MAJOR BRAND COMPATIBILITY.

	REF.	LIGHT SOURCE SIDE	REF.	ENDOSCOPE SIDE
STORZ	LSTORZ		ESTORZ	
WOLF	LWOLF		EWOLF	
WOLF SNAP			ESWOLF	
ACM	LACM		EACM	
OLYMPUS	LOLYMPUS			

DISTRIBUTION:



P & A MEDICARE COMPANY LIMITED

Contact: 093-639-8915 | pam@pat.co.th

09A-1102-A